

Product Data Sheet

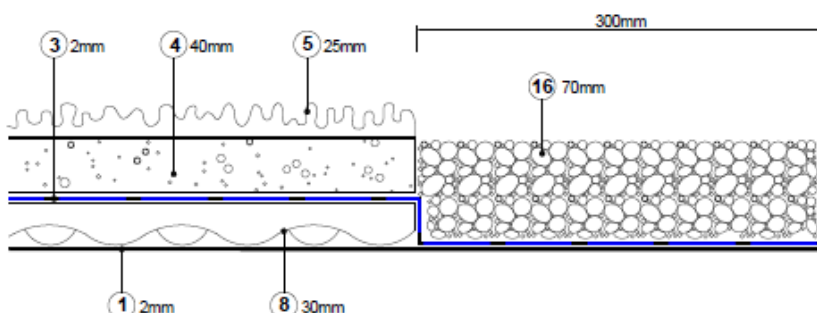
BD3 Biodiverse Living Roof Substrate

G2G Biodiverse BD3 substrate is suitable for Brown and Biodiverse roofs that are to be blanket covered, seeded or plug planted. BD3 is suitable due to the blend of organic material with crushed virgin brick, which maintains a well-drained structure that is more resistant to compression and settlement over time. The balance of water-absorbent mineral and low-nutrient organic material provides the optimum growing medium for a sustainable, long-term wildflower habitat. BD3 substrate is ideal for use with Verdant Blanket native wild plant seed, plug and blanket products.

Material	85% virgin crushed brick 15% organic Material
Bulk density	1.5 tonnes/m ³ 1.6 tonnes /m ³
Grading	Mix Grading
pH	6.8 – 8.2
Consignment Size	25kg bags Tonne bags

Composed of a mix of virgin crushed brick and organic material. Grey2green biodiverse mix meets strict soil association standards, and certification can be acquired upon request.

- Aids long term vegetation growth
- Free draining to prevent waterlogging
- Nutrient blend and open structure enables colonization on Brownfield and Biodiverse Roofs.



1	Water Proofing Layer
3	Filter Fleece
4	Growing Medium
5	Vegetation Layer
8	Drainage Layer
16	River Stone Edging