

Product Data Sheet

Biodrain

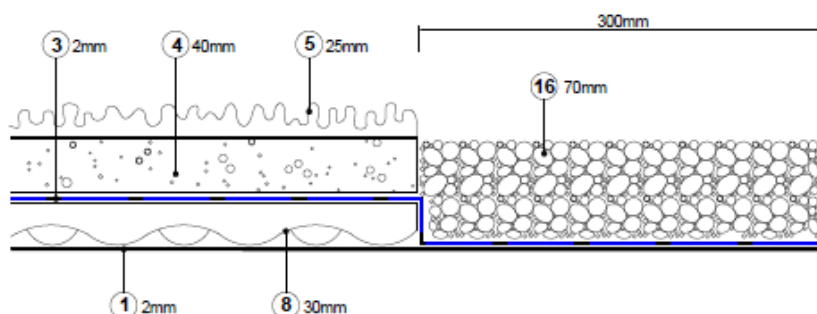
Biodrain, is a 100% recycled foam, water retention, protection and drainage layer. Allowing for a lightweight and speedy installation.

Material	Recycled open-pore, emission free PUR soft foam.
Dimensions	1m x 0.75m x 30mm Trough of cusplate 15mm
Weight	2.6 kg/m ² (dry) ~18 kg/m ² (saturated)
Water storage capacity	16.4 ltrs/m ²
Density	100 ± 20% kg/m ³
Compressive Strength	10 ± 20% kPa
Tensile Strength	> 55 kPa
Breaking elongation	>40%

Biodrain is produced from recycled foam with a cusplated (egg cup) base layer. This design allows for a 2 part function. The cusplate design allowing for drainage of excess water, the foam material provides a water retention layer feeding the system above. The drainage layer is a recycled material free from PUR (polyurethanes).

Benefits:

- Light and easy to install
- Aids long term growth
- Holds in moisture during dry spells



1	Water Proofing Layer
3	Filter Fleece
4	Growing Medium
5	Vegetation Layer
8	Drainage Layer
16	River Stone Edging