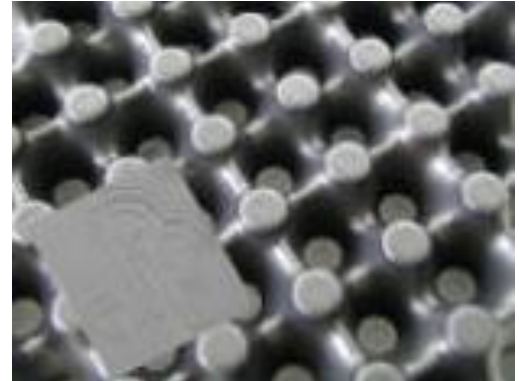


## Product Data Sheet

### DiaDrain 25

The DiaDrain 25 water drainage and reservoir boards are made of heavy duty polystyrene with excellent load-bearing capacity. The cusped surface is shaped on both sides. This layer is perfuated to ensure continuous aeration, water retention and water drainage in a green roof build up. Diadem 150 is the DiaDrain 25 product including filter and drainage layers.



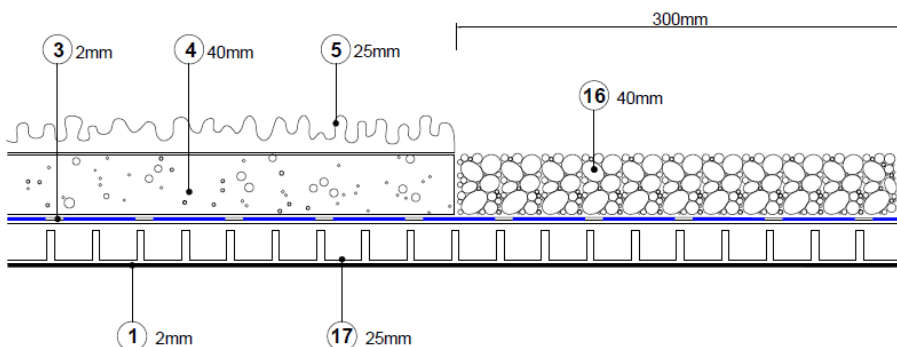
**Material:** Recycled Polystyrol

**Dimensions:** 1.96 x 0.9 x 0.025 = 1.76m<sup>2</sup>

**Weight:** 1.7 kg/m<sup>2</sup>

**Volume Capacity:** 11.8 l/m<sup>2</sup>

**Load Bearing:** 484 kN/m<sup>2</sup>



DiaDrain 25 is product number 17, and the schematic (left) gives an idea of the standard living roof layered system

#### Key

1	Water Proofing Layer
3	Filter Fleece
4	Growing Medium
5	Vegetation Layer
17	Drainage Layer
16	River Stone Edging

