

Product Data Sheet

Grey2Green's wildflower turf has been designed to develop a competitive balance between wildflower and grasses to encourage an elongated season of flowers and colour.

| | |
|-------------------------------|----------------------------------------------------------------|
| Material | HDPE mesh 25 mm organic layer |
| Dimensions | 1m x 2m |
| Depth | 30mm |
| Weight | 15 kg/m ² (dry) 35 kg/m ² (saturated) |
| Water storage capacity | Not yet known |
| Consignment Size | 48m ² |

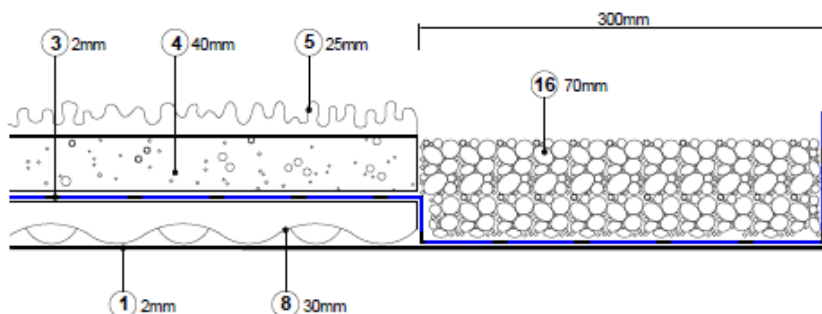
This native mix is designed to produce flowering plants from early spring to late autumn. The grass / wildflower mix is designed to complement each other, and not compete with each other which allow the flowers to succeed rather than be swamped by the grasses, which is a common problem with conventional soil based wildflower turf.

The turf is produced on a plastic matting which encourages root development, providing increased root strength which makes it more tolerant to stresses imposed during cutting, lifting and laying.

The formation of a dense sward of turf, combined with the large roll size, means that the turf acts as a weed blanket where the already established turf prevent any weed establishment in the inherent in the soil below.



© Wildflower turf Ltd



| | |
|----|----------------------|
| 1 | Water Proofing Layer |
| 3 | Filter Fleece |
| 4 | Growing Medium |
| 5 | Vegetation Layer |
| 8 | Drainage Layer |
| 16 | River Stone Edging |