

Product Data Sheet

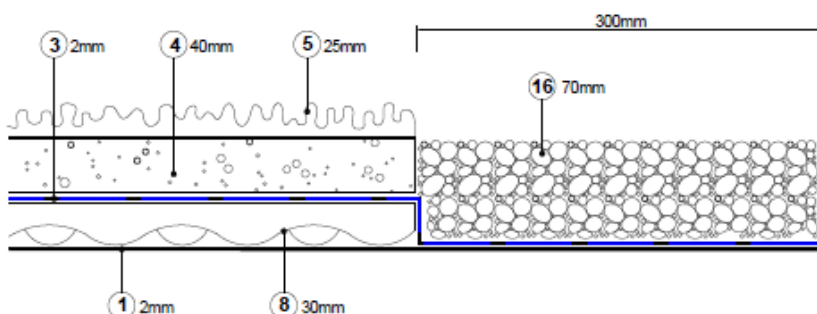
Extensive Living Roof Substrate

Grey2Green substrate is a low nutrient, free draining root zone for use in conjunction with our living roofs.

Material	100% recycled lightweight crushed brick aggregate
Bulk density	0.78 tonnes/m ³ 0.93 tonnes /m ³
Grading	Rounded, well graded, 2 – 11mm
pH	6.8 – 8.2
Consignment Size	25kg bags Tonne bags

Manufactured from a lightweight recycled aggregate mix, our substrate is designed to aid long term, self sustaining growth.

- Aids long term growth of sedum
- Free draining to prevent flooding
- Lightweight
- Gives ballast for base layers when installing system



1	Water Proofing Layer
3	Filter Fleece
4	Growing Medium
5	Vegetation Layer
8	Drainage Layer
16	River Stone Edging